

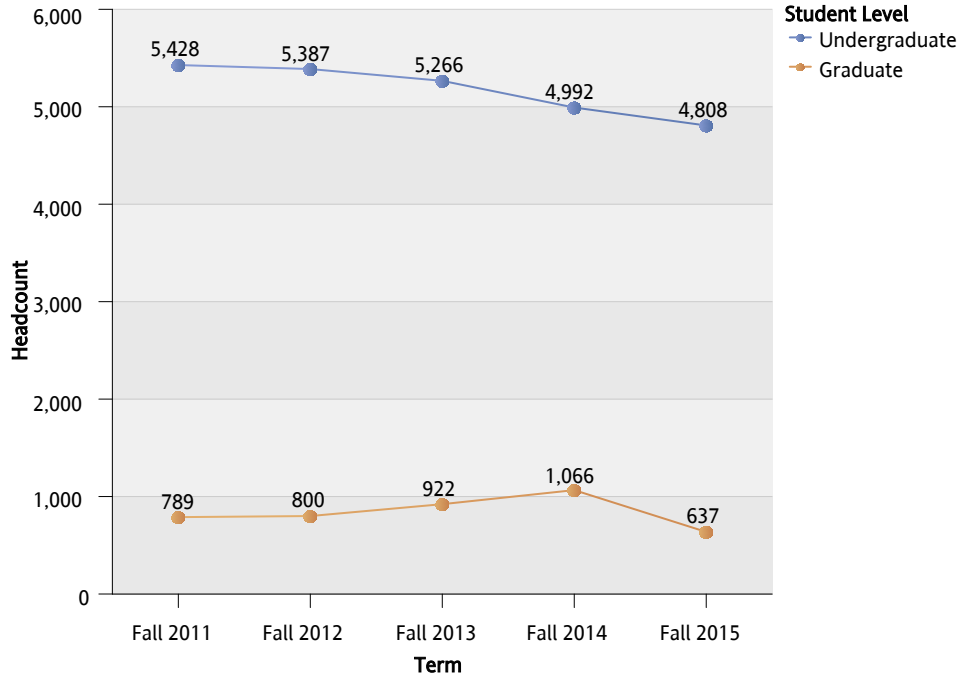
## Enrollment Summary - Fall 2015

	Fall 2015	Fall 2014	Change	% Change
Total Enrollment (Headcount):	5445	6058	-613	-10.1%
Total Student FTE*:	4,513.3	4,760.5	-247.2	-5.2%
Total Student Credit Hours*:	66,604	69,960	-3,356	-4.8%

	Fall 2015		Fall 2014		Change	
	Headcount	Percent	Headcount	Percent	Headcount	Percent
Undergraduate	4808	88.3%	4992	82.4%	-184	-3.7%
Graduate	637	11.7%	1066	17.6%	-429	-40.2%
Female	3346	61.5%	3676	60.7%	-330	-9.0%
Male	2099	38.5%	2381	39.3%	-282	-11.8%
Other	0	0.0%	1	0.0%	0	0.0%
Full Time	4367	80.2%	4508	74.4%	-141	-3.1%
Part Time	1078	19.8%	1550	25.6%	-472	-30.5%
Oregon Residents	4261	78.3%	4855	80.1%	-594	-12.2%
Out of State Residents	1184	21.7%	1203	19.9%	-19	-1.6%
Nonresident Alien	325	6.0%	367	6.1%	-42	-11.4%
Hispanic or Latino	566	10.4%	574	9.5%	-8	-1.4%
American Indian/Alaskan Native	95	1.7%	118	1.9%	-23	-19.5%
Asian	218	4.0%	198	3.3%	20	10.1%
Black/African American	199	3.7%	191	3.2%	8	4.2%
Pacific Islander	120	2.2%	141	2.3%	-21	-14.9%
White	3658	67.2%	4172	68.9%	-514	-12.3%
Two or More Races	15	0.3%	21	0.3%	-6	-28.6%
Unknown/Did Not Respond	249	4.6%	276	4.6%	-27	-9.8%

\*Fall Term uses the OUS definition of FTE, which excludes credit hours for students that withdrew prior to the fourth week of the term. OHSU Nursing credit hours are also excluded.

## Enrollment 5 Year Trend



## Enrollment by Student Class Standing - Fall 2015

Headcount	Coll Of Liberal Arts-Science	College Of Education	No College Designated	Total
Freshman	551	218	245	1014
Sophomore	515	243	86	844
Junior	677	319	87	1083
Senior	1212	512	35	1759
Non-Admit Undergrad			27	27
Non-Admit Grad			45	45
Admit PB Non-Grad	41	12	28	81
Graduate	83	509		592
<b>Total</b>	<b>3079</b>	<b>1813</b>	<b>553</b>	<b>5445</b>

# Enrollment by Major - Fall 2015

Student Level	Major	Headcount
Undergraduate	Amer Sign Lang/English Interp	4
	American Sign Language Studies	49
	Anthropology	30
	Art	52
	Art-BFA	4
	Biology	184
	Business	542
	Chemistry	47
	Communication Studies	108
	Community Crime Prevention	2
	Community Health Education	170
	Computer Science	148
	Computer Science-AB	1
	Computer Science/Math	26
	Contemporary Music, Jazz	4
	Contemporary Music, Popular	2
	Corrections	1
	Criminal Justice	385
	Dance	25
	Early Child	2
	Early Child/Elem	20
	Early Childhood Studies	10
	Earth Science	33
	Economics	40
	Elem/Middle	1
	English	59
	Exercise Science	236
	Fire Services Administration	1
	Geography	17
	German Studies	2
	Gerontology	29
	Gerontology-AB	3
	History	53
	Humanities	20
	Information Systems	59
	Interdisciplinary Studies	106

Student Level	Major	Headcount	
Undergraduate	International Studies	16	
	Law Enforcement	1	
	Mathematics	27	
	Middle Level/High School	12	
	Music	31	
	Music, Contemporary	30	
	Music,Contemp/Musical Theatre	1	
	No Major Declared	421	
	OHSU/WOU Nursing	62	
	Philosophy	4	
	Political Science	43	
	Pre-Amer Sign Lang/E I	120	
	Pre-Business	1	
	Pre-Chemistry	2	
	Pre-Early Child/Elem Auth	220	
	Pre-Early Childhood Auth	85	
	Pre-Education (Teaching)	146	
	Pre-Elem/Middle Level Auth	67	
	Pre-Fire Services Admin	7	
	Pre-High School Auth	18	
	Pre-Middle Level/High Auth	149	
	Pre-Professional Studies	160	
	Pre-Psychology	281	
	Psychology	89	
	Psychology-AB	6	
	Public Policy & Administration	36	
	Social Science	83	
	Sociology	55	
	Spanish	16	
	The Arts	5	
	Theater Arts	31	
	Theatre-BFA	20	
	Visual Communication Design	61	
	Graduate	Autism Spectrum Disorder	2
		Bilingual/ESOL	12

Student Level	Major	Headcount
Graduate	Contemporary Music-GRAD ONLY	8
	Criminal Justice-GRAD ONLY	33
	Curriculum and Instruction	45
	ESOL	54
	Early Child Educ-GRAD ONLY	1
	Elementary Education	2
	Graduate Certificate Only	5
	Health	11
	High School	58
	Information Tech-GRAD ONLY	64
	Integrated Science	3
	Interpreting Studies	10
	Language Arts	3
	Management/Info Systems	42
	Mathematics	58
	Middle Level/High School	6
	No Major Declared	1
	Reading-GRAD ONLY	60
	Rehab Coun -GRAD ONLY	18
	Rehab Coun Deafness -GRAD ONLY	7
Special Education	64	
Teacher Prep:Deaf-GRAD ONLY	11	
Teaching Interpreting Studies	14	

Currently, only a students primary major is being captured in the Data Warehouse. The second major for Dual Majors will be captured in the near future.

## Applications and Admissions Summary - Fall 2015

Admit Type	# of Applications	# of Admitted	Admitted to Applied Ratio	# of Enrolled	Enrolled to Admitted Ratio
New Freshman	3387	3078	90.9%	1028	33.4%
Transfer > 23 hrs	859	812	94.5%	571	70.3%
Post-Baccalaureate	49	44	89.8%	26	59.1%
Graduate/Masters	271	212	78.2%	165	77.8%

## Freshman Entrance Exams

### Mean High School GPA

	2011	2012	2013	2014	2015
Male	3.00	3.04	3.06	3.10	3.10
Female	3.24	3.29	3.31	3.30	3.28
<b>Combined</b>	<b>3.12</b>	<b>3.17</b>	<b>3.18</b>	<b>3.20</b>	<b>3.19</b>

### Mean SAT Composite Score

	2011	2012	2013	2014	2015
Male	1,001	1,069	994	1,100	1,201
Female	1,009	1,052	1,013	1,101	1,155
<b>Combined</b>	<b>1,005</b>	<b>1,061</b>	<b>1,003</b>	<b>1,101</b>	<b>1,178</b>

### Mean SAT Verbal Score

	2011	2012	2013	2015
Male	380	540		657
Female		495	570	750
<b>Combined</b>	<b>380</b>	<b>518</b>	<b>570</b>	<b>703</b>

### Mean ACT English Score

	2011	2012	2013	2014	2015
Male	19	19	18	19	21
Female	19	20	19	21	21
<b>Combined</b>	<b>19</b>	<b>19</b>	<b>19</b>	<b>20</b>	<b>21</b>

### Mean SAT Math Score

	2011	2012	2013	2014	2015
Male	510	548	508	556	604
Female	503	524	503	544	571
<b>Combined</b>	<b>506</b>	<b>536</b>	<b>506</b>	<b>550</b>	<b>588</b>

### Mean ACT Math Score

	2011	2012	2013	2014	2015
Male	21	21	20	21	23
Female	20	20	20	21	22
<b>Combined</b>	<b>20</b>	<b>21</b>	<b>20</b>	<b>21</b>	<b>22</b>

### Mean SAT Writing Score

	2011	2012	2013	2014	2015
Male	510	548	508	556	604
Female	503	524	503	544	571
<b>Combined</b>	<b>506</b>	<b>536</b>	<b>506</b>	<b>550</b>	<b>588</b>

### Mean ACT Composite Score

	2011	2012	2013	2014	2015
Male	20	21	20	21	22
Female	20	21	20	22	22
<b>Combined</b>	<b>20</b>	<b>21</b>	<b>20</b>	<b>21</b>	<b>22</b>

## New Undergraduate Students

### By State

State	Headcount
Oregon	735
Hawaii	57
California	52
Washington	41
International High Schools	8
Arizona	7
Alaska	6
Colorado	5
Other	5
Idaho	3
Nevada	3
Louisiana	1
Nebraska	1
Utah	1

### By Oregon High School

(Top 15 by enrollment)

School	Headcount
West Salem HS	33
Central High School	30
Mckay High School	22
North Salem High School	21
South Salem Senior High School	17
Sprague High School	17
Tigard Senior High School	16
Westview High School	15
Aloha High School	14
Forest Grove High School	14
McNary Senior High School	14
McMinnville Senior High Sch	13
Southridge High School	13
Dallas High School	11
Glencoe High School	11

## New Transfer Students

### From Oregon Community Colleges

School	Headcount
Blue Mountain Community Colleg	7
Central Oregon Community Colle	8
Chemeketa Community College	214
Clackamas Community College	16
Clatsop Community College	9
Klamath Community College	3
Lane Community College	24
Linn-Benton Community College	44
Mount Hood Community College	14
Portland Community College	47
Rogue Community College	9
Southwestern Oregon Community	12
Treasure Valley Community Coll	2
Umpqua Community College	7

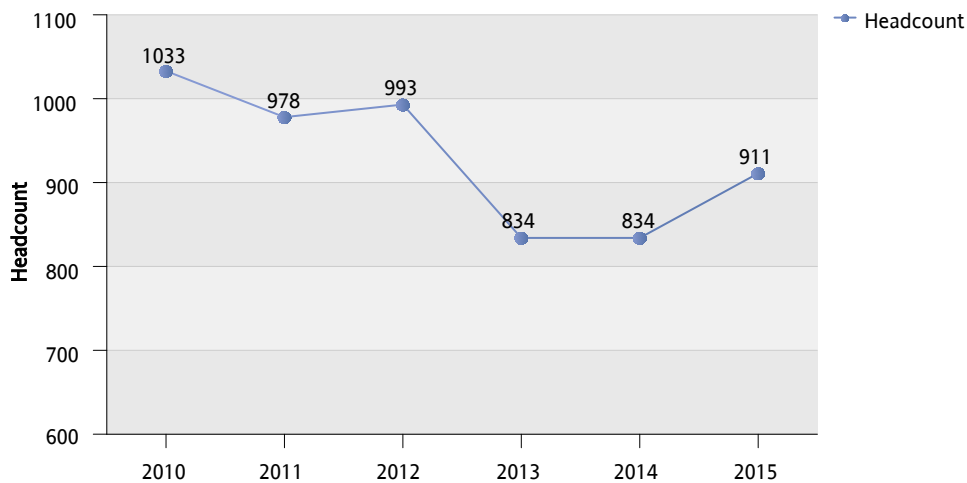
### From OUS Institutions

School	Headcount
Eastern Oregon University	7
Oregon Institute Of Technology	7
Oregon State University	16
Portland State University	13
Southern Oregon University	11
University Of Oregon	12

## Freshman Cohort - Incoming Freshmen Fall 2015

	Fall 2015	
	Headcount	Percent
Total Headcount	911	100%
Female	577	63.3%
Male	334	36.7%
Other	0	0.0%
Oregon Residents	711	78.0%
Out of State Residents	200	22.0%
First Generation (Self Reported)	375	41.2%
Nonresident Alien	19	2.1%
Hispanic or Latino	123	13.5%
American Indian/Alaskan Native	12	1.3%
Asian	62	6.8%
Black/African American	46	5.0%
Pacific Islander	30	3.3%
White	576	63.2%
Two or More Races	1	0.1%
Unknown/Did Not Respond	42	4.6%

## First Time Full Time Freshman Cohort - 5 Year Trend

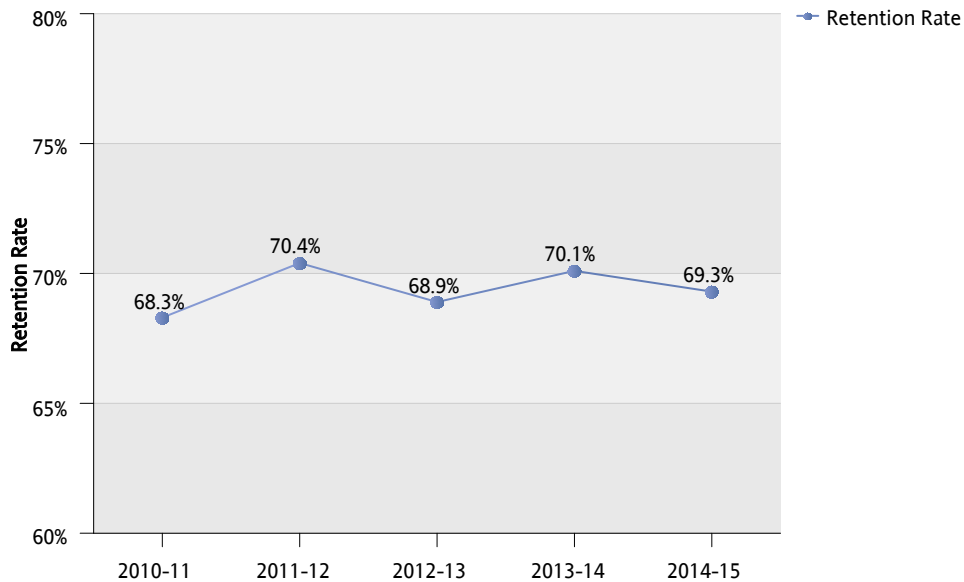


The First Time Full Time Freshman (FTFTFR) Cohort is established as a baseline for tracking retention and graduation rates.

## Freshman Retention - Fall 2014 to Fall 2015

	<u>Initial Headcount 2014</u>	<u>Returned Fall 2015</u>	<u>Retention Rate</u>
Freshman Cohort	834	578	69.3%
Female	508	368	72.4%
Male	325	210	64.6%
Other	0	0	0.0%
Oregon Residents	650	458	70.5%
Out of State Residents	184	120	65.2%
First Generation (Self Reported)	324	218	67.3%
Nonresident Alien	28	16	57.1%
Hispanic or Latino	105	77	73.3%
American Indian/Alaskan Native	17	12	70.6%
Asian	46	30	65.2%
Black/African American	36	22	61.1%
Pacific Islander	41	20	48.8%
White	523	373	71.3%
Two or More Races	2	0	0.0%
Unknown/Did Not Respond	36	28	77.8%

## Freshman Retention Rate - 5 Year Trend

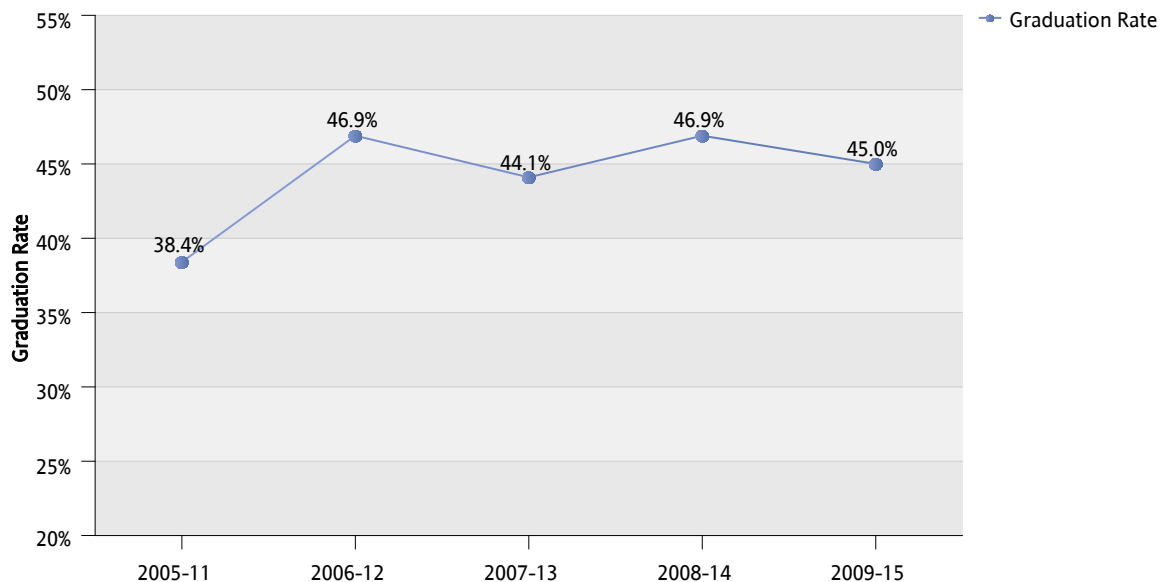


Freshman Retention Rates are based on New Freshmen (the Freshman Cohort) and if they return in the Fall of the year following their first year as a student.

## 6 Year Graduation Rates - Fall 2009 to Spring 2015

	<b>Initial Headcount 2009</b>	<b>Graduated by Spring 2015</b>	<b>Graduation Rate</b>
Freshman Cohort	938	422	45.0%
Female	556	285	51.3%
Male	382	129	33.8%
Other	0	0	0.0%
Oregon Residents	806	367	45.5%
Out of State Residents	132	55	41.7%
First Generation (Self Reported)	400	166	41.5%
Nonresident Alien	9	3	33.3%
Hispanic or Latino	104	58	55.8%
American Indian/Alaskan Native	15	5	33.3%
Asian	20	10	50.0%
Black/African American	33	10	30.3%
Pacific Islander	19	7	36.8%
White	698	315	45.1%
Two or More Races	30	11	36.7%
Unknown/Did Not Respond	10	3	30.0%

## 6 Year Graduation Rate - 5 Year Trend





## Degrees Awarded - Summer 2014 to Spring 2015

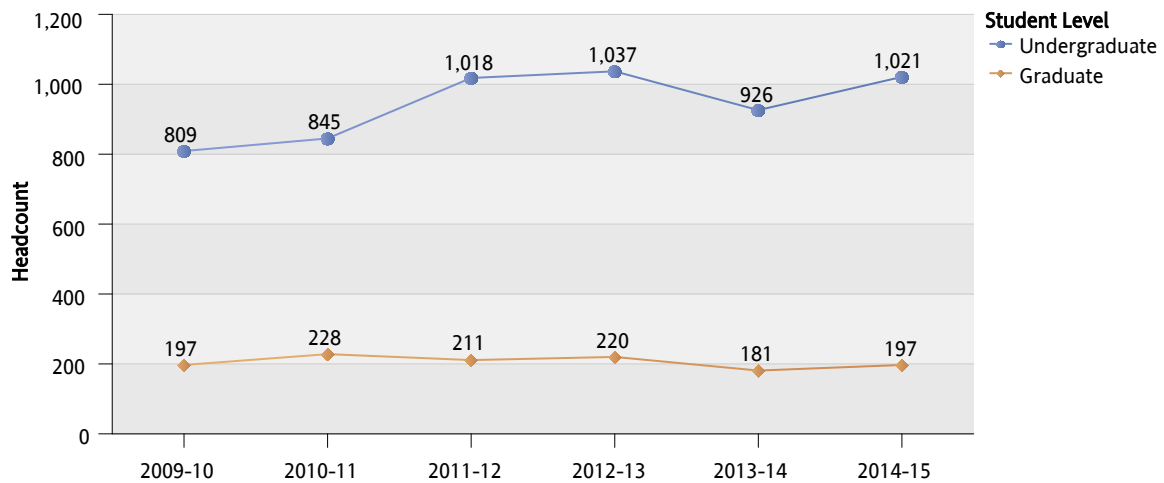
### Undergraduate

Major	Count	Pct
Business	143	14.0%
Criminal Justice	124	12.1%
Psychology	104	10.2%
Interdisciplinary Studies	82	8.0%
Exercise Science	69	6.8%
Community Health Education	55	5.4%
Social Science	39	3.8%
Early Child/Elem	37	3.6%
Communication Studies	35	3.4%
Computer Science	32	3.1%
Biology	30	2.9%
Economics	24	2.4%
English	19	1.9%
Gerontology	18	1.8%
Information Systems	16	1.6%
American Sign Language Studies	15	1.5%
Amer Sign Lang/English Interp	13	1.3%
All Others	166	16.3%

### Graduate

Major	Count	Pct
Management/Info Systems	31	15.7%
Information Tech-GRAD ONLY	28	14.2%
Middle Level/High School	24	12.2%
Reading-GRAD ONLY	21	10.7%
Special Education	16	8.1%
ESOL	15	7.6%
Rehab Coun -GRAD ONLY	12	6.1%
Curriculum and Instruction	11	5.6%
Teaching Interpreting Studies	10	5.1%
High School	7	3.6%
Criminal Justice-GRAD ONLY	5	2.5%
Bilingual/ESOL	4	2.0%
Contemporary Music-GRAD ONLY	4	2.0%
Health	3	1.5%
History	3	1.5%
Interpreting Studies	1	0.5%
Mathematics	1	0.5%
Rehab Coun Deafness -GRAD ONLY	1	0.5%

## Degrees Awarded - 6 Year Trend



## Degrees By Year By Major

	2005-06	2006-07	2007-08	2008-09	2009-10	2010-11	2011-12	2012-13	2013-14	2014-15	Total
Amer Sign Lang/English Interp	15	21	13	21	11	19	16	24	12	13	165
American Sign Language Studies				1	7	11	13	13	18	15	78
Anthropology	5	8	3	3	5	3	5	8	4	5	49
Art	4	11	12	14	28	16	26	17	18	7	153
Art-BFA	2							1	1	2	6
Associate In Arts	1	5	3	1							10
Bilingual/ESOL	25	16	6	3	5	1	2	3		4	65
Biology	31	18	24	27	10	32	35	21	21	30	249
Business	107	117	132	115	143	131	136	154	146	143	1324
Chemistry	4	6	5	7	4	5	3	5	4	8	51
Communication Studies			1		12	24	31	56	31	35	190
Community Crime Prevention	7	3	6	4	3	1					24
Community Health Education				16	32	24	68	44	56	55	295
Computer Science	9	4	17	14	12	15	25	20	15	32	163
Computer Science/Math	1	2	1			2	1	1		6	14
Contemporary Music-GRAD ONLY			2	3	3	9	3	4	6	4	34
Contemporary Music, Jazz								1			1
Corrections	15	11	8	7	3	2					46
Criminal Justice				21	27	43	70	77	86	124	448
Criminal Justice-GRAD ONLY	2	5	5	4	1	5	8	22	8	5	65
Curriculum and Instruction									2	11	13
Dance	6	3	6	6	8	5	9	5	5	4	57
Early Child	13	8	3	2	3	2	2		1	2	36
Early Child Educ-GRAD ONLY	2	1		3	1						7
Early Child/Elem	83	85	68	71	76	62	67	74	55	37	678
Earth Science	5	4	4	8	5	6	8	10	4	7	61
Economics	8	7	4	3	3	12	14	24	15	24	114
Elem/Middle	32	17	24	20	22	15	17	17	8	6	178
Elementary	1										1
Elementary Education	3										3
English	28	20	28	23	37	33	32	40	26	19	286
ESOL			12	15	22	16	22	20	20	15	142
Exercise Science				17	36	52	53	53	46	69	326

## Degrees By Year By Major

	2005-06	2006-07	2007-08	2008-09	2009-10	2010-11	2011-12	2012-13	2013-14	2014-15	Total
Fire Services Administration	6	6	6	5	7	2	8	6	4	5	55
French Teaching Major					1						1
Geography	5	7	5	3	8	3	6	2	4		43
German Studies	1	1	4	1		2	1	2	3	1	16
Gerontology							3	5	14	18	40
Gerontology-AB										4	4
GRADUATE-Major Not Required	21	14	1		5						41
Health	59	38	59	40	13	15	7	3	9	4	247
High School	72	65	54	43	58	48	30	16	12	7	405
History	23	17	14	25	19	24	16	12	16	15	181
Humanities	8	5	10	8	6	8	8	10	3	4	70
Information Systems	11	10	6	20	10	18	27	7	13	16	138
Information Tech-GRAD ONLY	3	2	10	27	8	14	13	17	17	28	139
Integrated Science	3	1	1	1	1						7
Interdisciplinary Studies	54	47	42	74	59	71	76	94	84	82	683
International Studies	2	1	4	2	5	4	3	2	5	2	30
Interpreting Studies								4		1	5
Language Arts		2	2	1	3	1	3	3	2		17
Law Enforcement	30	35	35	22	4	4	2				132
Management/Info Systems					5	14	24	15	15	31	104
Mathematics	8	9	11	13	10	7	7	22	11	11	109
Middle Level	3	1		1			1				6
Middle Level/High School	36	42	32	23	31	31	36	52	43	29	355
Music	4	2	3	2	2	1	1		2		17
Music, Contemporary	5	2	6	11	2	8	10	11	10	6	71
Music,Contemp/Musical Theatre		1		2	3	1	1				8
Natural Science	1		1				1		2	1	6
Philosophy	2	1		4	2	4	8	1	4	2	28
Physical Education	24	25	16	18	5		3	2	1		94
Political Science	7	8	9	15	11	11	10	15	14	12	112
Psychology	62	68	61	59	57	82	107	84	80	104	764
Psychology-AB									1	3	4
Public Policy & Administration	3	6	7	13	12	12	10	9	9	13	94

## Degrees By Year By Major

	2005-06	2006-07	2007-08	2008-09	2009-10	2010-11	2011-12	2012-13	2013-14	2014-15	Total
Reading-GRAD ONLY		9	21	20	25	35	26	24	18	21	199
Rehab Coun -GRAD ONLY				7	7	8	10	6	9	12	59
Rehab Coun Deafness -GRAD ONLY	13	13	13	3	4	6	4	2	2	1	61
Social & Educ Diff -GRAD ONLY		2									2
Social Science	56	40	47	47	53	35	55	37	27	39	436
Social Studies	1										1
Sociology	5	7	3	3	2	12	7	8	8	5	60
Spanish	15	8	13	10	13	12	9	18	17	9	124
Special Education	19	35	27	21	18	24	12	25	20	16	217
Speech Communication	30	17	25	23	8	3	2	1			109
Teacher Prep:Deaf-GRAD ONLY	8	6	3	1							18
Teaching Interpreting Studies								7	1	10	18
The Arts	1	1	1					3		1	7
Theater Arts	4	5	9	8	10	7	16	9	10	9	87
Theatre-BFA								2	1	3	6
Visual Communication Design								6	8	11	25
<b>Total</b>	<b>1014</b>	<b>931</b>	<b>948</b>	<b>1005</b>	<b>1006</b>	<b>1073</b>	<b>1229</b>	<b>1256</b>	<b>1107</b>	<b>1218</b>	<b>10787</b>

## Degrees By Year By Gender

		2005-06	2006-07	2007-08	2008-09	2009-10	2010-11	2011-12	2012-13	2013-14	2014-15	Total
UG	Male	307	294	311	316	310	361	422	408	381	417	3527
	Female	500	436	436	500	499	484	596	628	545	604	5228
	<b>Total</b>	<b>807</b>	<b>730</b>	<b>747</b>	<b>816</b>	<b>809</b>	<b>845</b>	<b>1018</b>	<b>1036</b>	<b>926</b>	<b>1021</b>	<b>8755</b>
GR	Male	81	55	57	70	65	79	77	62	75	73	694
	Female	126	146	144	119	132	149	134	158	106	124	1338
	<b>Total</b>	<b>207</b>	<b>201</b>	<b>201</b>	<b>189</b>	<b>197</b>	<b>228</b>	<b>211</b>	<b>220</b>	<b>181</b>	<b>197</b>	<b>2032</b>
<b>Total</b>		<b>1014</b>	<b>931</b>	<b>948</b>	<b>1005</b>	<b>1006</b>	<b>1073</b>	<b>1229</b>	<b>1256</b>	<b>1107</b>	<b>1218</b>	<b>10787</b>

## Degrees By Year By Degree Type

		2005-06	2006-07	2007-08	2008-09	2009-10	2010-11	2011-12	2012-13	2013-14	2014-15	Total	
UG	AB IN PSYCHOLOGY									1	3	4	
	Applied Baccalaureate										4	4	
	Associate in Arts	1	5	3	1							10	
	BA IN ANTHROPOLOGY	3	5	3	1	3	1	2	6				24
	BA IN ART	1	6	4	4	7	3	13	8	9	3		58
	BA IN ASL STUDIES				1	7	11	13	15	17	15		79
	BA IN ASL/ENGLISH INTERPRETING	15	21	13	21	11	18	16	22	13	13		163
	BA IN BIOLOGY	3		2	3		2	2				1	13
	BA IN BUSINESS	10	6	3	8	7	4	9	4	7	14		72
	BA IN CHEMISTRY								1				1
	BA IN COMM CRIME PREVENT	3	1		1								5
	BA IN COMMUNICATION STUDIES					5	7	8	17	20	11		68
	BA IN COMMUNITY HEALTH EDUCATI				2	4	5	7	5	9	8		40
	BA IN COMPUTER SCIENCE	1				1						1	3
	BA IN CORRECTIONS	5	3	2	1								11
	BA IN CRIMINAL JUSTICE				4	8	9	14	26	12	31		104
	BA IN DANCE	3	2	3	3	7	2	4	2	5	4		35
	BA IN EARTH SCIENCE		1										1
	BA IN ECONOMICS		1	2									3
	BA IN EDUCATION	60	58	39	52	30	23	19	18	22	15		336
	BA IN ENGLISH	27	19	28	22	37	33	32	40	26	19		283
	BA IN EXERCISE SCIENCE				1	4	1	5	5	3	5		24
	BA IN FIRE SERVICES ADMIN		2	1	1			2	1	1			8
	BA IN GEOGRAPHY			1		2							3
	BA in German Studies	1	1	4	1		2	1	2	3	1		16
	BA IN GERONTOLOGY								1	2	2		5
	BA IN HISTORY	18	10	9	20	9	13	10	4	7	2		102
	BA IN INFORMATION SYSTEMS	1		1	1					1			4
	BA IN LAW ENFORCEMENT	11	9	13	5	1							39
	BA IN MATHEMATICS	2	1			1	1			2			7
	BA IN MUSIC	1		1	1	2	1			1			7
BA IN PHILOSOPHY	1			2	2	2	2		2			11	
BA IN POLITICAL SCIENCE	1	4	3	3	5	3	4	5	6	7		41	

## Degrees By Year By Degree Type

		2005-06	2006-07	2007-08	2008-09	2009-10	2010-11	2011-12	2012-13	2013-14	2014-15	Total	
UG	BA IN PSYCHOLOGY	15	12	16	14	11	17	31	23	14	23	176	
	BA IN SOCIOLOGY	2	3		1	1	8	4	6	6	2	33	
	BA IN SPANISH	15	8	13	9	13	12	9	18	17	9	123	
	BA IN THE ARTS	1		2					1			4	
	BA IN THE HUMANITIES	9	2	4	3	2	3	1	4	1	1	30	
	BA IN THE SOCIAL SCIENCES	19	18	10	14	23	11	25	16	14	13	163	
	BA IN THEATER ARTS		1	5	4	2		8	5	5	5	35	
	BA IN VISUAL COMMUNICATION DES								2	1	4	7	
	BA INTERDISCIPLINARY STDY	19	14	18	18	17	12	21	24	19	27	189	
	BA INTERNATIONAL STUDIES	2	1	4	2	5	4	3	2	5	2	30	
	BA PUBLIC POLICY & ADMIN	2	1	2	1	4	3		2	1	4	20	
	BA SPEECH COMMUNICATION	9	4	11	11	3	1		1			40	
	Bachelor of Fine Arts					1							1
	BACHELOR OF MUSIC	7	3	7	13	5	9	11	12	10	6	83	
	BFA IN ART	2			1	2	2	2	1	2	2	14	
	BFA IN THEATRE		1	1	3	2	2	1	5	1	4	20	
	BS IN ANTHROPOLOGY	2	3		2	2	2	3	2	4	5	25	
	BS IN ART	3	5	7	9	18	11	11	9	8	4	85	
	BS IN ASL/ENGLISH INTERPRETING	1						1					2
	BS IN BIOLOGY	27	18	22	24	9	30	32	21	21	29	233	
	BS IN BUSINESS	96	111	129	107	136	127	127	150	139	129	1251	
	BS IN CHEMISTRY	4	6	5	7	4	5	3	4	4	8	50	
	BS IN COMM CRIME PREVENT	4	2	6	3	3	1						19
	BS IN COMMUNICATION STUDIES			1		7	17	23	39	11	24		122
	BS IN COMMUNITY HEALTH EDUCATI				14	28	19	61	39	47	47		255
	BS IN COMPUTER SCIENCE	8	4	17	14	11	15	25	20	15	31		160
	BS IN CORRECTIONS	10	8	6	6	3	2						35
	BS IN CRIMINAL JUSTICE				17	19	34	56	51	74	93		344
	BS IN CS/MATH	1	2	1			2	1	1		6		14
	BS IN DANCE	4	1	3	3	1	3	5	3				23
	BS IN EARTH SCIENCE	5	3	4	8	5	6	8	10	4	7		60
	BS IN ECONOMICS	8	6	2	3	3	12	14	24	15	24		111





## Degrees By Year By Degree Type

		2005-06	2006-07	2007-08	2008-09	2009-10	2010-11	2011-12	2012-13	2013-14	2014-15	Total
GR	MS IN EDUCATION	106	101	100	110	91	110	97	99	86	99	999
	MS in Mgmt and Info Systems					5	14	24	15	15	31	104
	<b>Total</b>	<b>207</b>	<b>201</b>	<b>201</b>	<b>189</b>	<b>197</b>	<b>228</b>	<b>211</b>	<b>220</b>	<b>181</b>	<b>197</b>	<b>2032</b>
<b>Total</b>		<b>1014</b>	<b>931</b>	<b>948</b>	<b>1005</b>	<b>1006</b>	<b>1073</b>	<b>1229</b>	<b>1256</b>	<b>1107</b>	<b>1218</b>	<b>10787</b>